



**Government of India
Ministry of Earth Sciences
India Meteorological Department**



Press Release

Date: 24th August, 2025

Time of Issue: 1350 hours IST

**Subject: i) Heavy to very heavy rainfall very likely to continue over Gujarat till 30th and over Rajasthan till 26th August with isolated extremely heavy rainfall also likely over East Rajasthan on 24th August, 2025.
ii) isolated very heavy rainfall likely over Jammu & Kashmir, Himachal Pradesh, Punjab, Haryana & Chandigarh on 24th; Uttarakhand during 24th-25th August, 2025.
iii) Increase in rainfall activity likely along the west coast from 26th August, 2025.**

Realised weather during past 24 hours till 0830 hours IST of today, the 24th August, 2025:

- ❖ Heavy to very heavy rainfall at some places with Extremely heavy rainfall (≥ 21 cm) has been recorded at isolated places over East Rajasthan.
- ❖ Very heavy rainfall (12-20 cm) has been recorded at isolated places over Jammu & Kashmir, East Madhya Pradesh, Punjab, Saurashtra & Kutch, East Uttar Pradesh and Chhattisgarh.
- ❖ Heavy rainfall (7-11 cm) has been recorded at isolated places over West Madhya Pradesh, Himachal Pradesh, Gujarat Region, West Rajasthan, Odisha, Jharkhand, Uttarakhand, Haryana, Bihar and Assam.

For more details of realised weather, kindly refer [Annexure I](#).

i. Weather Systems, Forecast and Warnings (refer to [Annexure II & III](#)):

- ❖ The Monsoon trough runs near its normal position.
- ❖ Yesterday's low pressure area over Gangetic West Bengal & neighbourhood moved west-northwestwards and lay over northeast Madhya Pradesh & neighbourhood at 0830 hrs IST of today, the 24th August, 2025.
- ❖ An upper air cyclonic circulation lay over northwest Madhya Pradesh & neighbourhood extended upto middle tropospheric levels tilting southwestwards with height.
- ❖ An upper air cyclonic circulation lay over Punjab in lower tropospheric levels.
- ❖ A western disturbance as a trough in westerly lay over north Pakistan & neighbourhood.
- ❖ A fresh low-pressure area is likely to form over northwest Bay of Bengal off Odisha-West Bengal coasts during next 48 hours.

Under the influence of these systems, the following weather is likely:

Northwest India:

- ❖ **Extremely heavy rainfall very likely over East Rajasthan on 24th August.**
- ❖ Isolated **heavy rainfall** likely over Uttarakhand & Himachal Pradesh during next 7 days; Jammu & Kashmir, Haryana during 24th-26th; Rajasthan during 24th-27th; Punjab during 24th-26th & on 29th, 30th; Uttar Pradesh on 24th, 25th, 29th & 30th August with **isolated very heavy rainfall over Jammu & Kashmir, Himachal Pradesh, Punjab, Haryana, Chandigarh on 24th; Uttarakhand during 24th-25th; Rajasthan during 24th-26th August.**
- ❖ Light/moderate rainfall at most/many places accompanied with thunderstorm & lightning likely over the western Himalayan region during next 7 days and adjoining plains during next 3 days and scattered rainfall during subsequent 4 days.

East & Central India:

- ❖ Isolated **heavy rainfall** likely over Madhya Pradesh, Chhattisgarh, Odisha during next 6-7 days; Sub-Himalayan West Bengal & Sikkim on 24th, 25th, 29th & 30th; Gangetic West Bengal on 24th; Bihar on 24th, 25th & 30th; Jharkhand

on 24th, 25th, 28th & 29th; Vidarbha during 28th-30th August with isolated **very heavy rainfall over Madhya Pradesh, Chhattisgarh on 24th; Odisha on 25th & 26th August.**

- ❖ Light to moderate rainfall at most/many places accompanied with thunderstorm & lightning likely over the region during next 7 days.

West India:

- ❖ **Spell of heavy to very heavy rainfall is very likely to continue over Gujarat state during next 7 days.**
- ❖ **Heavy rainfall** is very likely over Konkan & Goa during 25th-30th; Madhya Maharashtra on 24th & during 27th-30th August with very heavy over Konkan & Goa on 28th August.
- ❖ Light to moderate rainfall at most/many places very likely over the region during next 7 days.

Northeast India:

- ❖ Isolated **heavy rainfall** likely to continue over Assam & Meghalaya during next 7 days; Arunachal Pradesh on 24th, 25th & during 28th-30th; Nagaland, Manipur, Mizoram & Tripura during 24th-29th August.
- ❖ Light/moderate rainfall at many places accompanied with thunderstorm & lightning likely during next 2 days.

South Peninsular India:

- ❖ Isolated **heavy rainfall** likely over Kerala & Mahe during 26th-29th; Coastal Karnataka during 26th-30th; Interior Karnataka during 27th-29th; Telangana on 27th & 28th; Coastal Andhra Pradesh & Yanam on 25th & 26th August with **very heavy over Coastal Karnataka during 27th-29th August.**
- ❖ Strong surface winds (speed reaching 40-50 kmph) very likely over the region during next 3 days.
- ❖ Light to moderate rainfall at some places accompanied with thunderstorm & lightning likely over the region during next 3 days and many places during subsequent 4 days.

Fishermen warning:

Fishermen are advised not to venture into the following from 24th August to 29th August 2025 to the following Areas:

Arabian Sea

Along and off the Somalia, Oman coasts and adjoining sea areas; over some parts of central Arabian Sea, southwest, northeast Arabian Sea during 24th to 29th August; over few parts of northwest Arabian Sea during 24th to 26th August; along and off Gujarat coasts on 24th August and south Gujarat 25th August; Maharashtra, Goa, Karnataka, Kerala coasts, Lakshadweep during 26th to 29th August; few parts of Comorin area on 25th, and during 25th to 29th August.

Bay of Bengal:

Along and off Odisha on 24th and during 26th to 29th August, along and off west Bengal coasts on 24th and during 26th to 28th August, and along and off North Andhra Pradesh coasts during 27th to 29th August and adjoining sea Areas; over many parts of north and central Bay of Bengal during 26th to 29th August and some parts of southwest Bay of Bengal on 28th August.

ii. Weather conditions and forecast over Delhi/NCR during 24th to 27th August, 2025 (Annexure IV)

For more details, kindly refer National Weather Bulletin:

https://mausam.imd.gov.in/responsive/all_india_forecast_bulletin.php

For District wise warnings refer: <https://mausam.imd.gov.in/responsive/districtWiseWarningGIS.php>

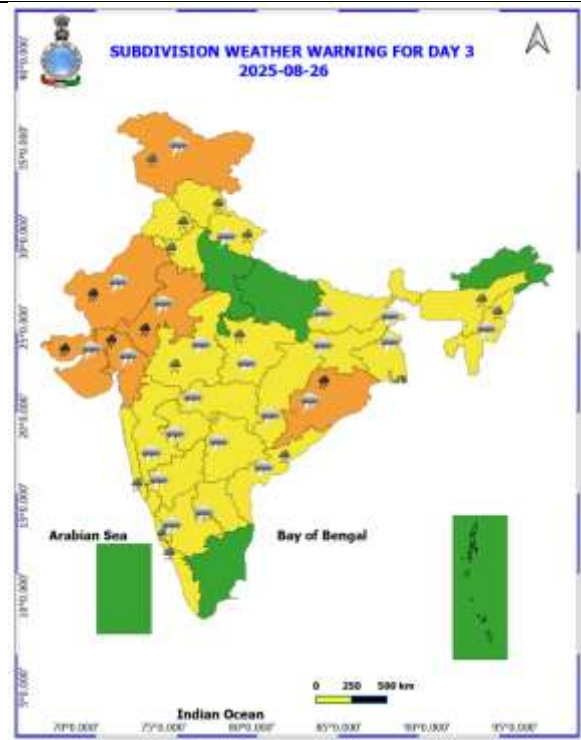
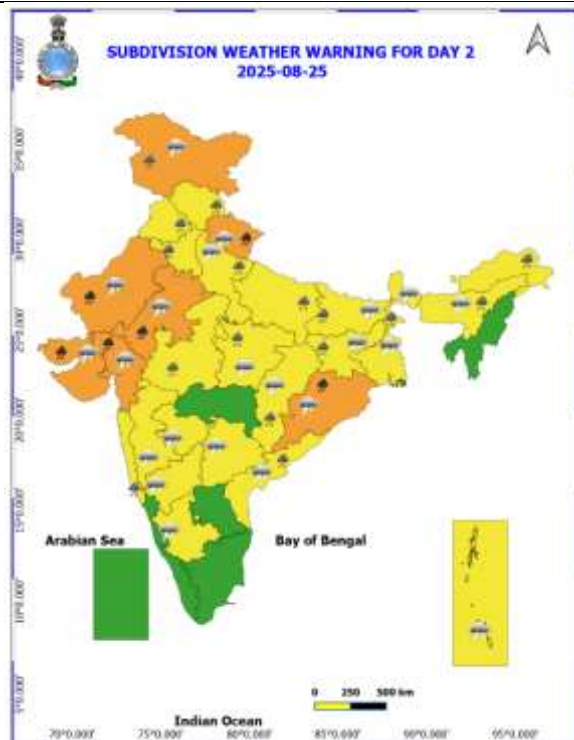
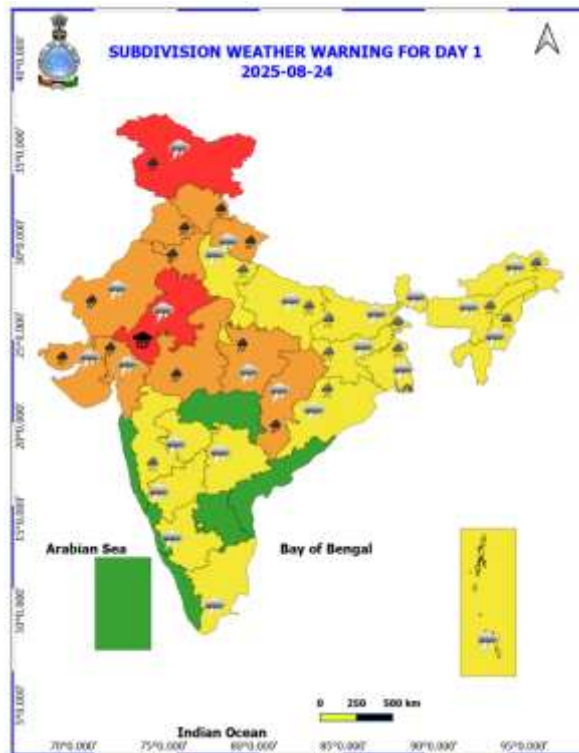
For Fishermen warning refer <https://rsmcnewdelhi.imd.gov.in/fishermen-warning.php>

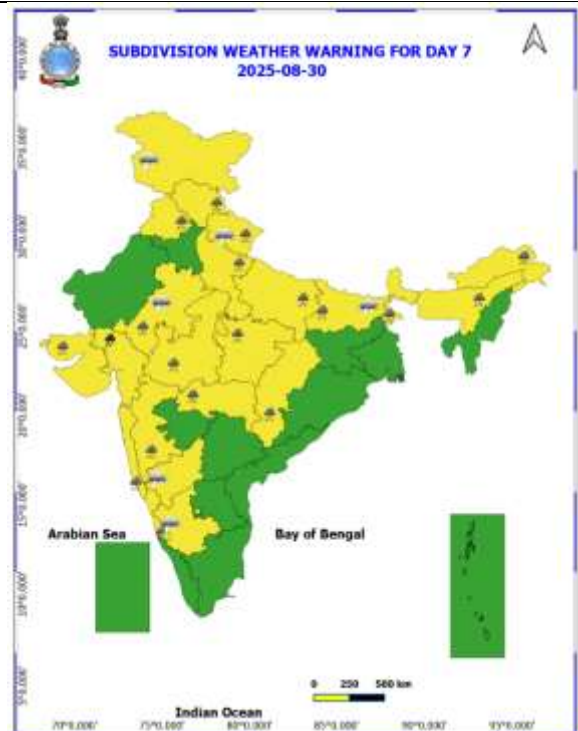
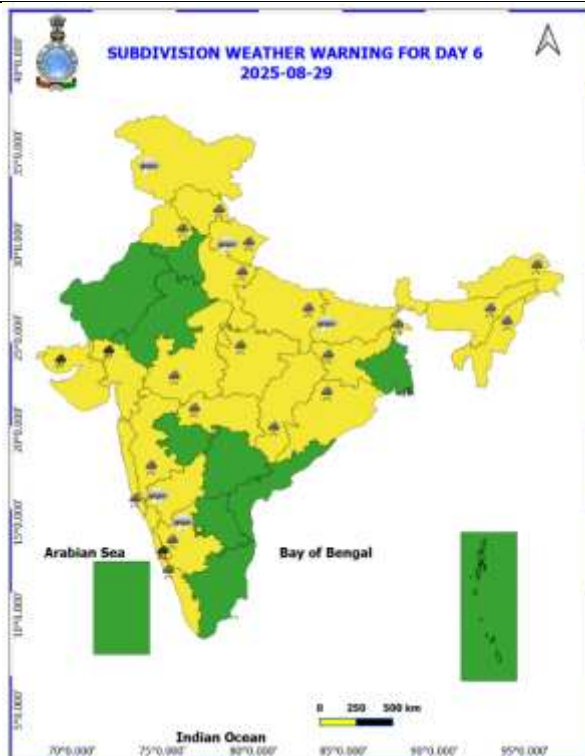
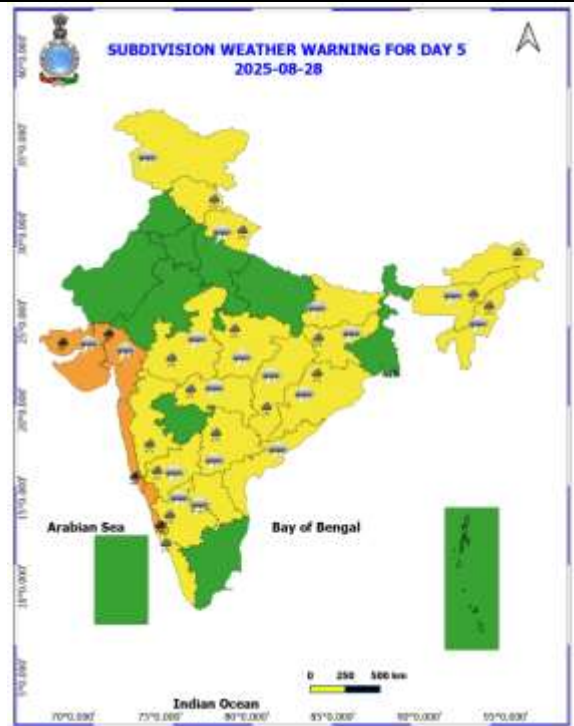
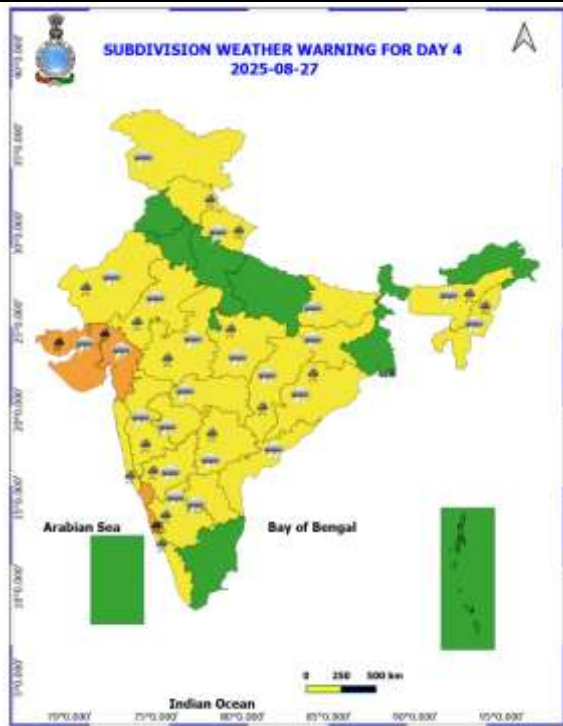
Rainfall recorded (in cm) during past 24 hours till 0830 hours IST of today, the 24th August:

- ❖ **East Rajasthan:** Dausa (Dausa) 29, Sapotra (Karauli) 17, Chomu (Jaipur) 17, Kotputli (Jaipur) 13, Gangapur (Sawai Madhopur) 13, Jamwa ramgarh (Jaipur) 13, Alwar (Alwar) 12, Malpura (Tonk) 11, Sanganer (Jaipur) 11, Sawai madhopur Tesil (Sawai Madhopur) 11, Pratapgarh (Pratapgarh) 11, Sawar (Ajmer) 11, Baunli (Sawai Madhopur) 11, Sambhar (Jaipur) 10, Choth ka barwara (Sawai Madhopur) 10, Pawta (Jaipur) 10, Nadoti (Karauli) 10, Naraina (Jaipur) 10, Chaksu (Jaipur) 10, Sikrai (Dausa) 10, Mozamabad (Jaipur) 9, Malarna dungar (Sawai Madhopur) 9, Jaipur Havai adda (Jaipur) 9, Shahpura (Jaipur) 9, Hindaun (Karauli) 8, Srimadhopur (Sikar) 8, Karauli (Karauli) 8, Behror (Alwar) 8, Lalsot (Dausa) 8, Ajmer (Ajmer) 8, Khandar (Sawai Madhopur) 7, Bansur (Alwar) 7, Danta Ramgarh (Sikar) 7, Kapasan (Chittorgarh) 7, Mandrayal (Karauli) 7, Neem ka thana (Sikar) 7, Sikar (Sikar) 7, Kekri (Ajmer) 7, Mount abu Tehsil (Sirohi) 7, Bassi (Jaipur) 7;
- ❖ **Jammu, Kashmir & Ladakh:** Jammu (dist Jammu) 19, Jammu AERO (dist Jammu) 17, Udhampur (IAF) (dist Udhampur) 14, Katra (dist Reasi) 11, Samba AWS (dist Samba) 11, Chatha Aws (dist Jammu) 10, Kathua (dist Kathua) 9;
- ❖ **East Madhya Pradesh:** Sidhi (gopadbanas) (dist Sidhi) 17, Devser (dist Singrauli) 14, Benibari (dist Anuppur) 11, Dindori-aws (dist Dindori) 11, Mohgaon (dist Mandla) 11, Bahri (dist Sidhi) 11, Sarai (dist Singrauli) 10, Amarpur (dist Dindori) 10, Unchehra (dist Satna) 10, Satna (raghurajnaragar) (dist Satna) 9, Singrauli-aws (dist Singrauli) 9, Bijuri (dist Anuppur) 8, Rajnagar (dist Chhatarpur) 7, Sihawal (dist Sidhi) 7, Maihar (dist Satna) 7, Bilaspur (dist Umaria) 7, Gonour (dist Panna) 7;
- ❖ **Punjab:** Ranjit Sagar Dam Site (dist Pathankot) 16, Madhopur (dist Pathankot) 16, Shahpur Kandi (dist Pathankot) 13, Phangota (dist Pathankot) 13, Thein Dam Aws (dist Pathankot) 7;
- ❖ **Saurashtra & Kutch:** Bhanvad (dist Devbhoomi Dwarka) 16, Jamjodhpur (dist Jamnagar) 13, Bhesan (dist Junagadh) 11, Kotdasangani (dist Rajkot) 10, Jamkandorna (dist Rajkot) 7, Lodhika (dist Rajkot) 7, Kutiana (dist Porbandar) 7;
- ❖ **East Uttar Pradesh:** Robertsganj (dist Sonbhadra) 13, Mirzapur Cwc (dist Mirzapur) 11, Chunar (dist Mirzapur) 10, Churk (dist Sonbhadra) 9;
- ❖ **Chhattisgarh:** Kapu (dist Raigarh) 13, Kusmi (dist Balrampur) 12, Doura Kochali (dist Balrampur) 9, Chando (dist Balrampur) 8, Ambikapur (dist Surguja) 8, Manendragarh (dist Manendragarh Bharatpur) 7, Poudi Uparora (dist Korba) 7, Pendra Road (dist Gaurela Pendra Marwahi) 7, Mukdega (dist Raigarh) 7, Balrampur (dist Balrampur) 7, Bhatgaon (dist Surajpur) 7, Samari (dist Balrampur) 7;
- ❖ **West Madhya Pradesh:** Bhitarwar (dist Gwalior) 12, Dabra (dist Gwalior) 12, Chinor (dist Gwalior) 11, Badi (dist Raisen) 10, Sabalgarh (dist Morena) 9, Bareli (dist Raisen) 9, Kumbhraj (dist Guna) 8, Vijaypur (dist Sheopur) 8, Udaipura (dist Raisen) 7, Narwar (dist Shivpuri) 7;
- ❖ **Himachal Pradesh:** Pandoh (dist Mandi) 12, Kasauli (dist Solan) 11, Mandi (dist Mandi) 7, Karsog (dist Mandi) 7;
- ❖ **Gujarat Region:** Danta (dist Banaskantha) 11, Nandod (dist Narmada) 10, Palanpur (dist Banaskantha) 9, Vyara (dist Tapi) 9, Rajpipala (dist Narmada) 9, Vijaynagar (dist Sabarkantha) 8, Garudeshwar (dist Narmada) 8, Ukai (dist Surat) 8, Khedbrahma (dist Sabarkantha) 8, Songadh (dist Tapi) 7, Sinor (dist Vadodara) 7, Dharampur (dist Valsad) 7, Visnagar (dist Mehsana) 7, Poshina (dist Sabarkantha) 7, Quant (dist Chhota Udepur) 7, Tilakwada (dist Narmada) 7;
- ❖ **West Rajasthan:** Makrana (Nagaur) 11, Nawa (Nagaur) 11, Merta City (Nagaur) 8;
- ❖ **Odisha:** Tensa (dist Sundargarh) 11, Banspal (dist Keonjhar) 11, Keonjhar (dist Keonjhar) 9, Derabis (dist Kendrapara) 9, Telkoi (dist Keonjhar) 7;
- ❖ **Jharkhand:** Anandpur (dist West Singhbhum) 9, Jagarnathpur (dist West Singhbhum) 7, Kurdeg (dist Simdega) 7;
- ❖ **Uttarakhand:** Loharkhet (dist Bageshwar) 9, Uttar Kashi (cwc) (dist Uttarkashi) 9, Uttar Kashi (dist Uttarkashi) 7;
- ❖ **Haryana:** Kanina (dist Mahendragarh) 9, Manethi Rev (dist Rewari) 7, Rewari (dist Rewari) 7;
- ❖ **Bihar:** Rohtas (dist Rohtas) 8, Fatehpur (dist Gaya) 8, Rajpur (dist Buxar) 6, Balchhi (dist Patna) 6;
- ❖ **Assam:** Dhupdhara Arg (dist Goalpara) 7;
- ❖ **Delhi:** Delhi University (dist Central Delhi) 5, Delhi Ridge (dist Central Delhi) 4, Lodi Road (dist South East Delhi) 4, Safdarjung (dist South East Delhi) 4;

Table-1								
7 Days Rainfall Forecast								
S.No.	Subdivision	24- Aug	25- Aug	26- Aug	27- Aug	28- Aug	29- Aug	30- Aug
		Day 1	Day 2	Day 3	Day 4	Day 5	Day 6	Day 7
1	ANDAMAN & NICOBAR ISLANDS	WS	WS	WS	FWS	FWS	SCT	SCT
2	ARUNACHAL PRADESH	FWS	SCT	SCT	SCT	SCT	FWS	FWS
3	ASSAM & MEHGHALAYA	FWS	FWS	SCT	FWS	FWS	WS	FWS
4	NAGALAND, MANIPUR, MIZORAM AND TRIPURA	FWS	FWS	FWS	FWS	FWS	FWS	FWS
5	SUB HIMALAYAN WEST BENGAL & SIKKIM	WS	WS	FWS	FWS	FWS	WS	WS
6	GANGETIC WEST BENGAL	WS	FWS	SCT	SCT	FWS	FWS	WS
7	ODISHA	FWS	WS	WS	FWS	FWS	FWS	FWS
8	JHARKHAND	WS	FWS	FWS	SCT	SCT	FWS	FWS
9	BIHAR	FWS	FWS	SCT	SCT	SCT	SCT	FWS
10	EAST UTTAR PRADESH	FWS	WS	FWS	SCT	SCT	FWS	FWS
11	WEST UTTAR PRADESH	FWS	WS	FWS	SCT	SCT	SCT	FWS
12	UTTARAKHAND	WS	WS	WS	FWS	FWS	WS	FWS
13	HARYANA, CHANDIGARH & DELHI	WS	FWS	FWS	SCT	SCT	FWS	FWS
14	PUNJAB	WS	SCT	SCT	SCT	SCT	FWS	FWS
15	HIMACHAL PRADESH	WS	WS	WS	WS	FWS	FWS	WS
16	JAMMU AND KASHMIR AND LADAKH	WS	SCT	WS	SCT	ISOL	ISOL	SCT
17	WEST RAJASTHAN	FWS	FWS	FWS	FWS	SCT	SCT	SCT
18	EAST RAJASTHAN	WS	WS	FWS	FWS	SCT	SCT	SCT
19	WEST MADHYA PRADESH	WS	FWS	FWS	FWS	WS	WS	WS
20	EAST MADHYA PRADESH	WS	FWS	FWS	FWS	WS	WS	WS
21	GUJRAT REGION	WS	WS	WS	WS	WS	WS	WS
22	SAURASHTRA & KUTCH	WS	WS	WS	WS	WS	WS	WS
23	KONKAN & GOA	WS	WS	WS	WS	WS	WS	WS
24	MADHYA MAHARASHTRA	SCT	SCT	FWS	SCT	SCT	SCT	ISOL
25	MARATHWADA	ISOL	ISOL	ISOL	SCT	SCT	SCT	ISOL
26	VIDARBHA	FWS	FWS	FWS	WS	WS	WS	WS
27	CHHATTISGARH	WS	WS	WS	WS	WS	WS	WS
28	COASTAL ANDHRA PRADESH	ISOL	ISOL	SCT	FWS	FWS	SCT	SCT
29	TELANGANA	ISOL	ISOL	SCT	FWS	FWS	FWS	FWS
30	RAYALASEEMA	ISOL	ISOL	SCT	SCT	ISOL	ISOL	ISOL
31	TAMILNADU & PUDUCHERRY	ISOL	ISOL	ISOL	ISOL	ISOL	ISOL	ISOL
32	COSTAL KARNATAKA	FWS	FWS	WS	WS	WS	WS	WS
33	NORTH INTERIOR KARNATAKA	ISOL	ISOL	SCT	WS	WS	FWS	FWS
34	SOUTH INTERIOR KARNATAKA	ISOL	ISOL	SCT	FWS	WS	FWS	FWS
35	KERALA AND MAHE	ISOL	SCT	WS	WS	WS	FWS	FWS
36	LAKSHADWEEP	SCT	SCT	FWS	WS	WS	FWS	FWS

- As the lead period increases forecast accuracy decrease.





- Action may be taken based on ORANGE AND REDCOLOUR warnings.
- Vulnerable regions likely urban and hilly areas action may be initiated for heavy rainfall warning.
- As the lead period increases forecast accuracy decreases.

Detailed districtwise Multi Hazard weather warning for next five days available at
<https://mausam.imd.gov.in/responsive/districtWiseWarningGIS.php>

Weather forecast over Delhi/NCR during 24th August to 27th August 2025**Past Weather:**

There has been fall in the minimum temperature up to 1 – 2°C and no large change in maximum temperature up to 1°C over Delhi/NCR during the past 24 hours. The maximum and minimum temperatures over Delhi were around 33 to 35°C and 23 to 25°C respectively. The minimum temperature was below normal up to 2 – 3°C and maximum temperature was below normal up to 1 – 2°C. Generally cloudy sky conditions with predominant surface wind from the northeast/east direction with wind speeds up to 14 kmph prevailed during the past 24 hours. Moderate rainfall has been recorded in most places over Delhi. Generally cloudy sky conditions with a wind speed of less than 18 kmph from the east direction prevailed over the region in the forenoon today.

Weather Forecast:

24.08.2025: Generally cloudy sky. One or two spells of very light to light rain/thundershowers at many places with moderate rain at isolated places during afternoon/evening. The maximum temperatures over Delhi are likely to be in the range of 32 to 34°C. The maximum temperature will be near normal. The predominant surface wind will likely be from the southeast direction with a wind speed of upto 10-15 kmph during the afternoon hours. The wind speed will decrease becoming less than 12 kmph from the southeast direction during the evening and night.

25.08.2025: Generally cloudy sky. One or two spells of light to moderate rain/thundershowers. The maximum and minimum temperatures over Delhi are likely to be in the range of 30 to 32°C and 21 to 23°C respectively. The maximum and minimum temperature will be below normal up to 2 to 4 °C. The predominant surface wind will likely to be from the southeast direction with a wind speed of up to 10-15 kmph during morning hours. The wind speed will gradually increase becoming less than 22 kmph from the southeast direction in the afternoon. The wind speed will decrease becoming less than 15 kmph from the southeast direction during the evening and night.

26.08.2025: Generally cloudy sky. Possibility of very light to light rain/ thundershowers. The maximum and minimum temperatures over Delhi are likely to be in the range of 31 to 33°C and 21 to 23°C respectively. The maximum and minimum temperature will be below normal upto 2 to 4°C. The predominant surface wind will likely to be from the southeast direction with a wind speed of upto 10-15 kmph during morning hours. The wind speed will gradually increase becoming less than 18 kmph from the southeast direction in the afternoon. The wind speed will decrease becoming less than 12 kmph from the southeast direction during the evening and night.

27.08.2025: Generally cloudy sky. possibility of very light to light rain/thundershowers. The maximum and minimum temperatures over Delhi are likely to be in the range of 32 to 34°C and 22 to 24°C respectively. The minimum temperature will be below normal up to 2 to 4°C and the maximum temperature will be near normal. The predominant surface wind will likely be from the southeast direction with a wind speed of less than 12 kmph during the morning hours. The wind speed will gradually increase becoming less than 16 kmph from the southeast direction in the afternoon. The wind speed will gradually decrease becoming less than 12 kmph from the southeast direction during the evening and night.

Impact expected and Action Suggested due to light to moderate rainfall with thundershowers:

- Damage to standing crops, Minor to major damage to power and communication lines due to breaking of branches, Partial damage to vulnerable structures due to strong winds, Loose objects may fly.
- People are advised to keep a watch on the weather for worsening conditions and be ready to move to safer places accordingly, stay indoors, close windows & doors and avoid travel if possible, take safe shelters; do not take shelter under trees, do not lie on concrete floors and do not lean against concrete walls, unplug electrical/ electronic appliances, immediately get out of water bodies, keep away from all the objects that conduct electricity.

Impact & Action Suggested due to

- ❖ **Extremely heavy rainfall over East Rajasthan on 24th August.**
- ❖ **Very heavy rainfall over** Jammu & Kashmir, Himachal Pradesh, Punjab, Haryana, Chandigarh, Madhya Pradesh, Chhattisgarh on 24th; Uttarakhand during 24th-25th; Rajasthan during 24th-26th; Odisha on 25th & 26th, Gujarat state during 24th-30th, Coastal Karnataka during 27th-29th August.

Impact Expected

- Localized Flooding of roads, water logging in low lying areas and closure of underpasses mainly in urban areas of the above region.
- Occasional reduction in visibility due to heavy rainfall.
- Disruption of traffic in major cities due to water logging in roads leading to increased travel time.
- Minor damage to kutcha roads.
- Possibilities of damage to vulnerable structure.
- Localized Landslides/Mudslides/landslips/mudslips/landsinks/mudsinks.
- Damage to horticulture and standing crops in some areas due to inundation.
- It may lead to riverine flooding in some river catchments (for riverine flooding please visit Web page of CWC)

Action Suggested

- Check for traffic congestion on your route before leaving for your destination.
- Follow any traffic advisories that are issued in this regard.
- Avoid going to areas that face the water logging problems often.
- Avoid staying in vulnerable structure.

Agromet advisories for likely impact of Heavy / Heavy to Very Heavy / Extremely Heavy Rainfall

- In **East Rajasthan**, make arrangements to drain out excess water from fields of rice, maize, soybean, black gram and groundnut in **Southeastern Humid Plain Zone**; pearl millet, sorghum, maize, green gram, black gram, moth bean, sesame and cluster bean in **Flood Prone Eastern Plain Zone**; groundnut, green gram, moth bean, cowpea, pearl millet, maize, sorghum and vegetables in **Semi-Arid Eastern Plain Zone**; vegetable nurseries, maize, soybean and groundnut in **Sub Humid Southern Plain and Aravali Hill Zone** and soybean, maize and cotton in **Southern Humid Plain Zone**. In **West Rajasthan**, make provision to drain out excess rain water from fields of pearl millet, green gram and cluster bean in **Arid Western Plain Zone**.
- In **Gujarat**, provide mechanical support to horticultural crops and staking or support to vegetables and young fruit plants to avoid lodging due to heavy rains and strong winds. Make arrangements to drain out excess water from fields of rice, sugarcane, vegetables and tuber crops in **South Gujarat Heavy Rainfall Zone**; groundnut, cotton, soybean, black gram, green gram, sesame and pigeon pea in **South Saurashtra Zone**; rice, cotton, green gram, black gram, pigeon pea, pearl millet and vegetables in **Bhal and Coastal Zone**; castor, cotton, groundnut, pearl millet and sesame in **North Gujarat Zone**; rice, pearl millet, pigeon pea, green gram, black gram, cotton, soybean, maize, castor and vegetables in **Middle Gujarat Zone**; rice, cotton, sugarcane and pigeon pea in **South Gujarat Zone**; groundnut, cotton, sesame, black gram, green gram, pigeon pea and castor in **North Saurashtra Zone** and *kharif* groundnut, cotton, soybean, black gram, green gram, sesame, pigeon pea and castor in **North West Zone**.
- In **Madhya Pradesh**, provide adequate drainage in fields of soybean, maize and vegetables in **Malwa Plateau Zone**; maize, soybean, green gram, black gram, pigeon pea and vegetables in **Gird Zone**; soybean, maize and vegetables in **Kymore Plateau and Satpura Hill Zone**; soybean, green gram, black gram and maize in **Bundelkhand Zone** and soybean and vegetables in **Vindhyan Plateau Zone**.
- In **Chhattisgarh**, ensure proper drainage in fields of rice and vegetables in **North Hill Zone** and maize, groundnut, soybean, pigeon pea and vegetables in **Chhattisgarh Plain Zone**. Postpone fresh transplanting of rice in low land areas in **North Hill Zone**.
- In **Jammu and Kashmir**, do not allow water to stagnate in fields of maize, pulses, cowpea, bajra and vegetables in **Sub Tropical Zone**. Proper drainage should be ensured in the fields of paddy, maize, Pulses, horticultural and vegetable crops in **Intermediate Zone**.
- In **Himachal Pradesh**, maintain proper drainage channels in ginger, turmeric and maize fields in **Mid Hills Sub Humid Zone** and rice, maize and vegetable fields in **Sub Montane and Low Hills Sub Tropical Zone**. In **High**

Hills Sub Temperate Wet Zone, harvest ripened tomatoes and ensure proper drainage in maize, kidney bean, vegetable fields and fruit orchards.

- In **Uttarakhand**, maintain proper drainage channels in fields of soybean, maize, pulses, finger millet, ginger, vegetable and fruit orchards in **Hill Zone**; barnyard millet, finger millet and green gram in **Sub Humid Sub Tropic Zone** and rice, green gram, black gram, sugarcane, maize, soybean, groundnut and vegetables in **Bhabar and Tarai Zone**.
- In **Punjab**, maintain proper drainage in chilli fields and remove stagnant rainwater immediately after rainfall in **Undulating Plain Zone**. Ensure proper drainage in fields of sugarcane, maize, soybean and green gram in **Sub-Montane Undulating Zone** and sugarcane, maize and cotton in **Central Plain Zone**.
- In **Haryana**, make arrangements to drain out excess water from fields of sugarcane, cotton, maize, pearl millet and vegetables in **Eastern Zone**.
- In **Gangetic West Bengal**, ensure proper drainage in fields of rice and groundnut in **Laterite and Red Soil Zone**; rice, jute and vegetables in **New Alluvial Zone** and betel gardens and newly transplanted winter vegetables in **Coastal Saline Zone**. In **Sub-Himalayan West Bengal**, make provision to drain out excess water from *aman* rice and vegetable fields (chilli, bitter gourd, pointed gourd, okra, brinjal etc.) and cover the chilli seedlings with plastic to protect them from heavy rains in **Terai Zone**.
- In **Odisha**, make provision for draining out excess rain water from fields of rice, maize, black gram and vegetables in **North Central Plateau Zone**; finger millet, pulses, maize, groundnut and vegetables in **North Eastern Plateau Zone**; rice, vegetables and fruit orchards in **North Eastern Coastal Plain Zone**; rice, maize and vegetables in **West Central Table Land Zone** and green gram, black gram, sugarcane, vegetables and fruit orchards in **East and South Eastern Coastal Plain Zone**. In **Keonjhar district**, postpone the sowing of green gram and black gram and nursery sowing and transplanting of tomato.
- In **Bihar**, ensure proper drainage to drain out excess rainwater from standing crops such as pigeon pea, turmeric, yam, sunflower and maize as well as from vegetable nurseries in **South Bihar Alluvial Zone**.
- In **Jharkhand**, ensure adequate drainage facilities in fields of rice, maize, black gram, green gram, tuber crops and vegetables and cover the vegetable seedlings with polythene to protect them from heavy rains in **Western Plateau Zone**.

Livestock / Fishery

- Keep the animals inside the shed during heavy rainfall and provide them balanced feed.
- Store feed and fodder in a safe place to prevent spoilage.
- Construct an outlet with proper netting around the ponds to drain out excess water, thereby preventing fish from escaping in case of overflow.

Agromet advisories for likely impact of Thunderstorm / Gusty Winds / Squally Winds

(Based on the IBF and advisories issued by different AMFUs)

- Provide mechanical support to horticultural crops and staking or support to vegetables and young fruit plants / fruit-bearing plants to avoid lodging due to strong winds.

Flash flood guidance:

24 hours Outlook for the Flash Flood Risk (FFR) till 1130 IST of 25-08-2025 :

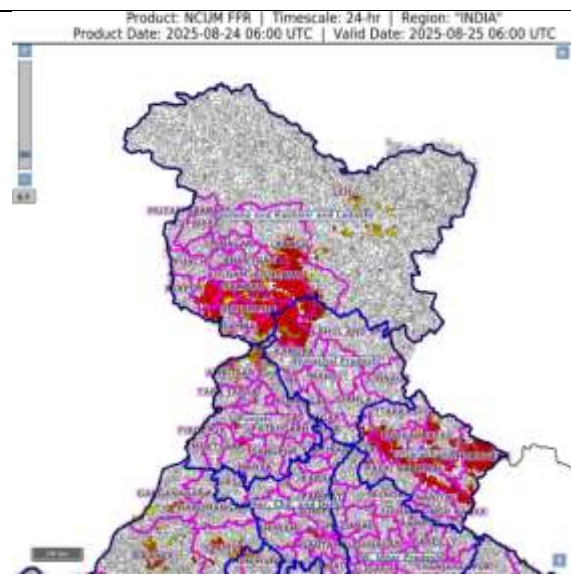
Moderate flash flood risk likely over few watersheds & neighbourhoods of following Met Sub-divisions during next 24 hours.

Jammu & Kashmir and Ladakh – Doda, Jammu Kathua, Kargil, Leh, Kishtwar, Mirpur, Ramban, Reasi, Rajouri, Samba and Udhampur districts.

Himachal Pradesh - Chamba, Kangra, Lahul & Spiti, Mandi, Kullu, Shimla and Sirmaur districts.

Uttarakhand – Almora, Bageshwar, Chamoli, Champawat, Nainital, Pauri Garhwal, Pithoragarh, Rudraprayag, Tehri Garwal and Uttarkashi districts.

Surface runoff/ Inundation may occur at some fully saturated soils & low-lying areas over Area of Concern (AoC) as shown in map due to expected rainfall occurrence in next 24 hours.



24 hours Outlook for the Flash Flood Risk (FFR) till 1130 IST of 25-08-2025:

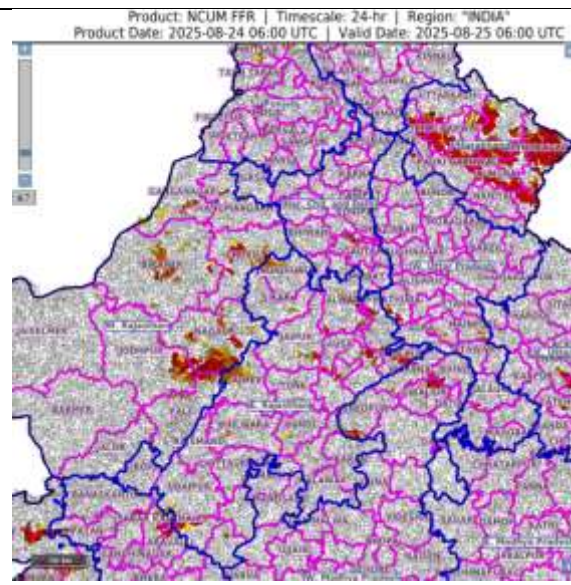
Low to Moderate flash flood risk likely over few watersheds & neighbourhoods of following Met Sub-divisions during next 24 hours.

West Madhya Pradesh – Bhind, Gwalior, Morena, Shivpuri and Sheopur districts.

East Rajasthan – Ajmer, Alwar, Bundi, Bhilwara, Dholpur, Dausa, Ungarpur, Udaipur, Karauli, Tonk and Sawai Madhopur districts

West Rajasthan – Bikaner, Churu, Pali, Nagaur, Jodhpur, Sri Ganganagar, Hanumangarh districts.

Surface runoff/ Inundation may occur at some fully saturated soils & low-lying areas over Area of Concern (AoC) as shown in map due to expected rainfall occurrence in next 24 hours.



Legends & abbreviations:

- ❖ **Heavy Rain:** 64.5-115.5mm; **Very Heavy Rain:** 115.6-204.4mm; **Extremely Heavy Rain:** >204.4mm.
- ❖ **Obsy:** Observatory; Automatic Weather Station; **ARG:** Automatic Rain Gauge; **dist:** District; **NH:** National Highway; **KVK:** Krishi Vigyan Kendra; **DVC:** Damodar Valley Corporation; **PTO:** Part Time Office, **Aero:** Aerodrome, **IAF:** Indian Air Force.
- ❖ **Region wise classification of meteorological Sub-Divisions:**
 - **Northwest India:** Western Himalayan Region (Jammu-Kashmir-Ladakh-Gilgit-Baltistan-Muzaffarabad, Himachal Pradesh and Uttarakhand); Punjab, Haryana-Chandigarh-Delhi; West Uttar Pradesh, East Uttar Pradesh, West Rajasthan and East Rajasthan.
 - **Central India:** West Madhya Pradesh, East Madhya Pradesh, Vidarbha and Chhattisgarh.
 - **East India:** Bihar, Jharkhand, Sub-Himalayan West Bengal & Sikkim; Gangetic West Bengal, Odisha and Andaman & Nicobar Islands.
 - **Northeast India:** Arunachal Pradesh, Assam & Meghalaya and Nagaland, Manipur, Mizoram & Tripura.
 - **West India:** Gujarat Region, Saurashtra & Kutch, Konkan & Goa, Madhya Maharashtra and Marathawada.
 - **South India:** Coastal Andhra Pradesh & Yanam, Telangana, Rayalaseema, Coastal Karnataka, North Interior Karnataka, South Interior Karnataka, Kerala & Mahe, Tamil Nadu, Puducherry & Karaikal and Lakshadweep.

LEGENDS

1. अंडमान और निकोबार द्वीपसमूह

2. अरुणाचल प्रदेश

3. असम और मेघालय

4. नागालैंड, मणिपुर, मिजोरम और त्रिपुरा

5. उप-हिमालयी पश्चिम बंगाल और सिक्किम

6. गंगीय पश्चिम बंगाल

7. ओडिशा

8. झारखंड

9. बिहार

10. पूर्वी उत्तर प्रदेश

11. पश्चिम उत्तर प्रदेश

12. उत्तराखंड

13. हरियाणा, चंडीगढ़ और दिल्ली

14. पंजाब

15. हिमाचल प्रदेश

16. जम्मू और कश्मीर और लद्दाख

17. पश्चिम राजस्थान

18. पूर्वी राजस्थान

19. पश्चिम मध्य प्रदेश

20. पूर्वी मध्य प्रदेश

21. गुजरात

22. सौराष्ट्र

23. कोंकण और गोवा

24. मध्य महाराष्ट्र

25. मराठवाड़ा

26. विदर्भ

27. छत्तीसगढ़

28. तटीय आंध्र प्रदेश और यनम

29. तेलंगाना

30. रायलसीमा

31. तमिलनाडु, पुडुचेरी और कराईकल

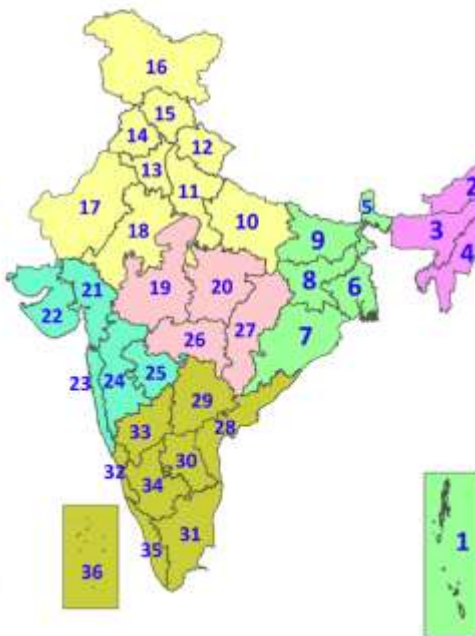
32. तटीय कर्नाटक

33. आंतरिक उत्तरी कर्नाटक

34. आंतरिक दक्षिणी कर्नाटक

35. केरल और माहे

36. लक्षद्वीप



1. Andaman & Nicobar Islands

2. Arunachal Pradesh

3. Assam & Meghalaya

4. Nagaland, Manipur, Mizoram & Tripura

5. Sub-Himalayan West Bengal & Sikkim

6. Gangetic West Bengal

7. Odisha

8. Jharkhand

9. Bihar

10. East Uttar Pradesh

11. West Uttar Pradesh

12. Uttarakhand

13. Haryana, Chandigarh & Delhi

14. Punjab

15. Himachal Pradesh

16. Jammu & Kashmir and Ladakh

17. West Rajasthan

18. East Rajasthan

19. West Madhya Pradesh

20. East Madhya Pradesh

21. Gujarat

22. Saurashtra

23. Konkan & Goa

24. Madhya Maharashtra

25. Marathwada

26. Vidarbha

27. Chhattisgarh

28. Coastal Andhra Pradesh & Yanam

29. Telangana

30. Rayalaseema

31. Tamilnadu, Puducherry & Karaikal

32. Coastal Karnataka

33. North Interior Karnataka

34. South Interior Karnataka

35. Kerala & Mahe

36. Lakshadweep

SPATIAL DISTRIBUTION (% of Stations reporting)

% Stations	Category	% Stations	Category
76-100	Widespread (WS/Most Places)	26-50	Scattered (SCT/A Few Places)
51-75	Fairly Widespread (FWS/Many Places)	1-25	Isolated (ISOL)



Fog



Heavy Snow



Cold Wave



Heavy Rain



Dust Storm



Cold Day



Very Heavy Rain



Heat Wave



Ground Frost



Extremely Heavy Rain



Warm Night



Thunder & Lightning



Hot Day



Hailstorm



Hot & Humid



Dust Raising Winds



Strong Surface Winds

COLOUR CODED WARNING

No Warning (No Action)

Watch (Be Aware)

Alert (Be Prepared To Take Action)

Warning (Take Action)

Probabilistic Forecast

Terms	Probability of Occurrence (%)
Unlikely	< 25
Likely	25 - 50
Very Likely	50 - 75
Most Likely	> 75

* Red colour warning does not mean "Red Alert", Red colour warning means "Take Action".

Forecast and Warning for any day is valid from 0830 hours IST of day till 0830 hours IST of next day.

For more details, kindly visit <https://mausam.imd.gov.in> or contact: 011-2434-4599

(Service to the Nation since 1875)

DEFINITION/CRITERIA

Rain/ Snow *

Heavy: 64.5 to 115.5 mm/cm *
Very Heavy: 115.6 to 204.4 mm/cm *
Extremely Heavy: > 204.4 mm/cm *

Heat Wave

When maximum temperature of a station reaches $\geq 40^{\circ}\text{C}$ for plains and $\geq 30^{\circ}\text{C}$ for hilly regions
(a) Based on Departure from normal

Heat Wave: Maximum Temperature Departure from normal 4.5°C to 6.4°C .

Severe Heat Wave: Maximum Temperature Departure from normal $\geq 6.5^{\circ}\text{C}$

(b). Based on Actual maximum temperature

Heat Wave: When actual maximum temperature $\geq 45^{\circ}\text{C}$.

Severe Heat Wave: When actual maximum temperature $\geq 47^{\circ}\text{C}$.

(c). Criteria for heat wave for coastal stations

When maximum temperature departure is $> 4.5^{\circ}\text{C}$ from normal. Heat Wave may be described provided maximum temperature $\geq 37^{\circ}\text{C}$.

Warm Night

When maximum temperature remains 40°C

Warm Night: When minimum temperature departure 4.5°C to 6.4°C .

Severe Warm Night: When minimum temperature departure $> 6.4^{\circ}\text{C}$.

Cold Wave

When minimum temperature of a station $\leq 10^{\circ}\text{C}$ for plains and $\leq 0^{\circ}\text{C}$ for hilly regions.

(a). Based on departure

Cold Wave: Minimum Temperature Departure from normal -4.5°C to -6.4°C .

Severe Cold Wave: Minimum Temperature Departure from normal $\leq -6.5^{\circ}\text{C}$

(b) Based on actual Minimum Temperature (for Plains only)

Cold Wave: When Minimum Temperature is $\leq 4.0^{\circ}\text{C}$

Severe Cold Wave: When Minimum Temperature is $\leq 2.0^{\circ}\text{C}$

(c) For Coastal Stations

When Minimum Temperature departure is $\leq -4.5^{\circ}\text{C}$ & actual Minimum Temperature is $\leq 15^{\circ}\text{C}$

Cold Day

When minimum temperature of a station $\leq 10^{\circ}\text{C}$ for plains and $\leq 0^{\circ}\text{C}$ for hilly regions

Based on departure

Cold Day: Maximum Temperature Departure from normal -4.5°C to -6.4°C .

Severe Cold Day: Maximum Temperature Departure from normal $\leq -6.5^{\circ}\text{C}$

Fog

Phenomenon of small droplets suspended in air and the horizontal visibility $< 1\text{km}$

Moderate Fog: When the visibility between 500-200 metres

Dense Fog: when the visibility between 50- 200 metres

Very Dense Fog: when the visibility < 50 metres

Thunderstorm

Sudden electrical discharges manifested by a flash of light (Lightning) and a sharp rumbling sound (thunder)

Dust/Sand Storm

An ensemble of particles of dust or sand energetically lifted to great heights by a strong and turbulent wind.

Frost

Ice deposits on ground

Air temperature $\leq 4^{\circ}\text{C}$ (over Plains)

Squall

A strong wind that rises suddenly, lasts for atleast 1 minute.

Moderate: Wind speed 52-61 kmph

Severe: Wind speed 62-67 kmph

Very Severe: Wind speed > 67 kmph

Sea State

Effect of various waves in the sea over specific area

Rough to very rough: Wind speed 41-62 kmph (22-33 knots) & Wave height 2.5-6 metre

High to very high: Wind speed 63-117 kmph (34-63 knots) & Wave height 6-14 metre

Phenomenal: Wind speed > 117 kmph (> 63 knots) & Wave height > 14 metre

Cyclone

Cyclonic Storm: Wind speed 62-87 kmph (34-47 knots)

Severe Cyclonic Storm: Wind speed 88-117 kmph (48-63 knots)

Very Severe Cyclonic Storm: Wind speed 118-165 kmph (64 - 89 knots)

Extremely Severe Cyclonic Storm: Wind speed 166-220 kmph (90 -119 knots)

Super Cyclone Storm: Wind speed > 220 kmph (> 119 knots)

* Red colour warning does not mean "Red Alert", Red colour warning means "Take Action".

Forecast and Warning for any day is valid from 0830 hours IST of day till 0830 hours IST of next day.

For more details, kindly visit <https://mausam.imd.gov.in> or contact: 011-2434-4599

(Service to the Nation since 1875)

Hot and Humid: When maximum temperatures remain 3°C above normal along with the above normal relative humidity.